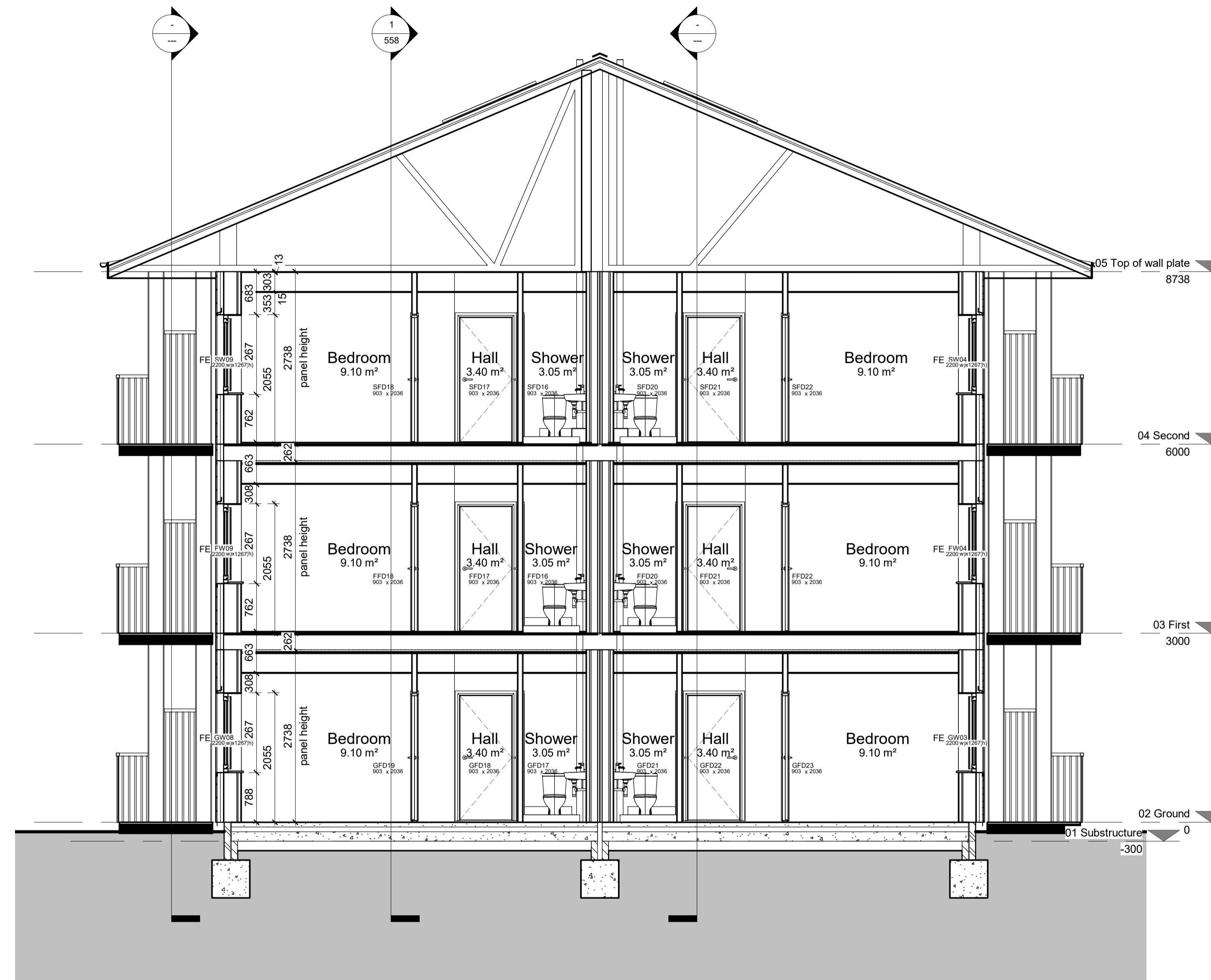


- O/S information tbc
- components to external windows / doors to be created / updated
- door / full height window to lounge
- balcony change to glass
- detailing
- confirmation of M&E strategy and design - MVHR extracts
- spandrel panels in roof space and trusses spanning party wall detail tbc
- location of M&E kit tbc
- no of pv panels tbc



**Section A-A**  
1 : 50

P3	Preliminary Issue - design development	20/01/2021	HW
P2	Preliminary Issue - changes to roof, sheathing board & window heights	15/12/2020	HW
P1	Preliminary Issue	10/12/2020	HW

Rev	Description	Date	by
<b>Indesign</b> 178 Birmingham Road West Bromwich West Midlands B70 6QG T: 0121 764 3880 F: 0121 764 3838 <a href="http://accordgroup.org.uk/indesign">accordgroup.org.uk/indesign</a>			

Client Accord Group				
Project CHARM, Former Victoria Works Car Park Edward Street Redditch, B97 6HA				
Title CHARM Section A-A				
Job 19-1624	Dwg no 557	Rev P3	date Scale (@ A1) drawn 1:50 HW	10/12/2020 HW