

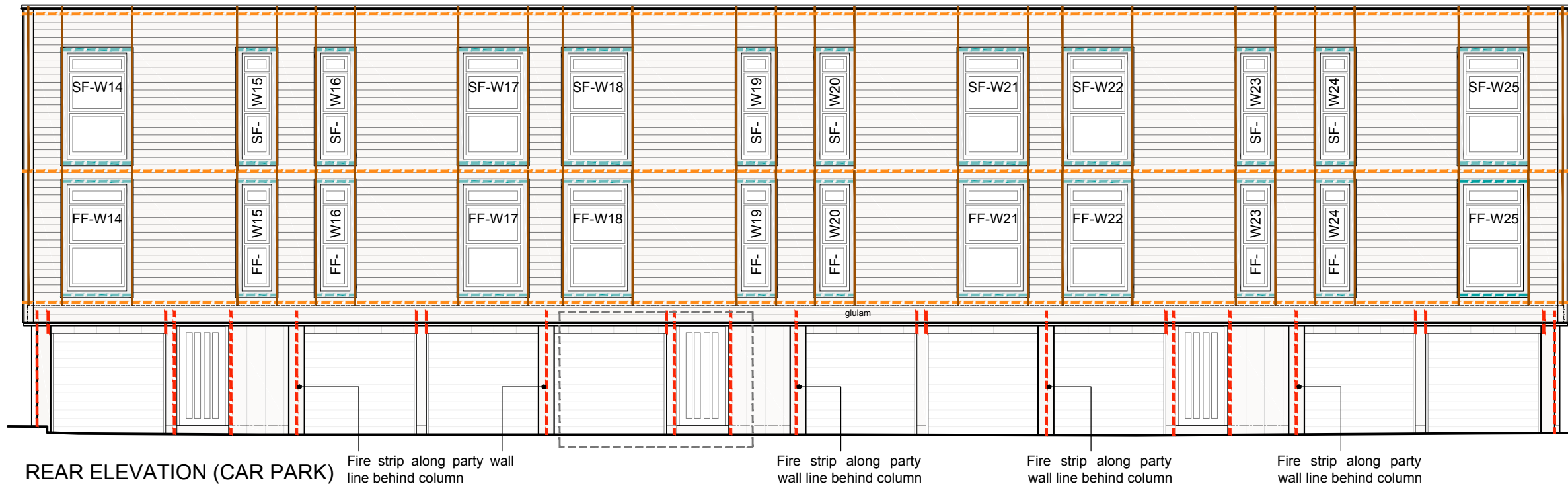
FIRE COMPARTMENTATION to be provided in accordance with Approved Document B Volume 1 - B3 Sections 7: Compartmentation and Section 8: Cavities - Flats. Fire closers to be provided at floor level and party walls. With additional closers (fire strips) within the rainscreen cladding as detailed on sheet nos. 515 and 516. For details of junction of compartment wall with roof, refer to sheet no. 507

M&E contractor to allow for fire stopping around all service penetrations in accordance with Building Regulations. Requirements for non-combustible ducting to be confirmed by Building Control.

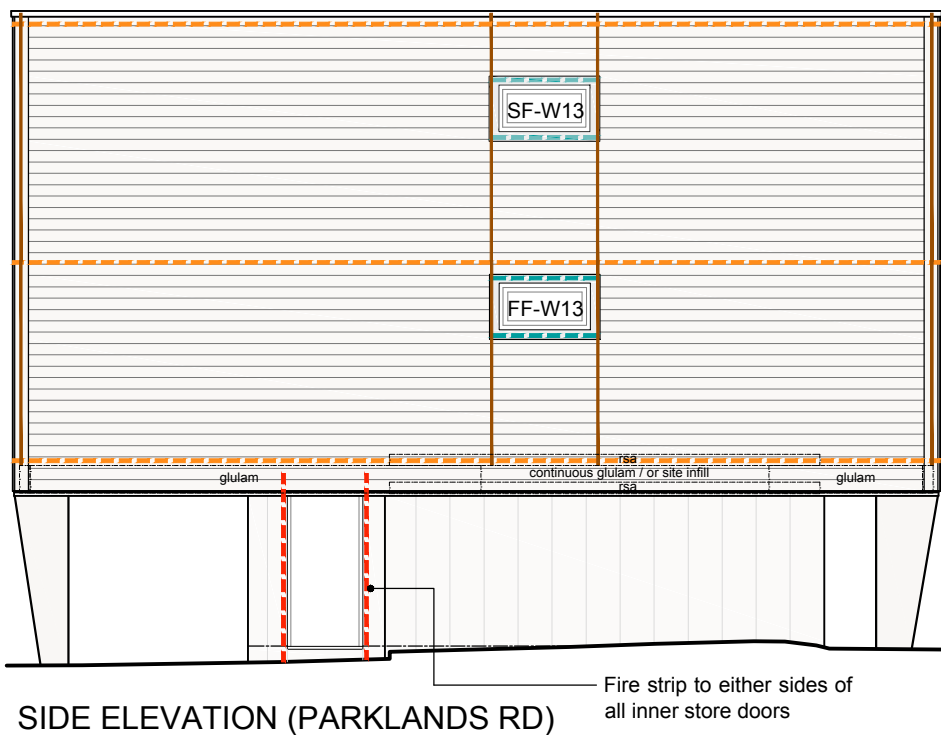
ALL DIMENSIONS ARE TO BE CHECKED ON SITE PRIOR TO CONSTRUCTION. THE CONTRACTOR IS TO NOTIFY THE DESIGN TEAM OF ANY DISCREPANCY BETWEEN DRAWINGS, SPECIFICATION AND SITE DIMENSIONS. DO NOT SCALE FROM THIS DRAWING.

LEGEND:

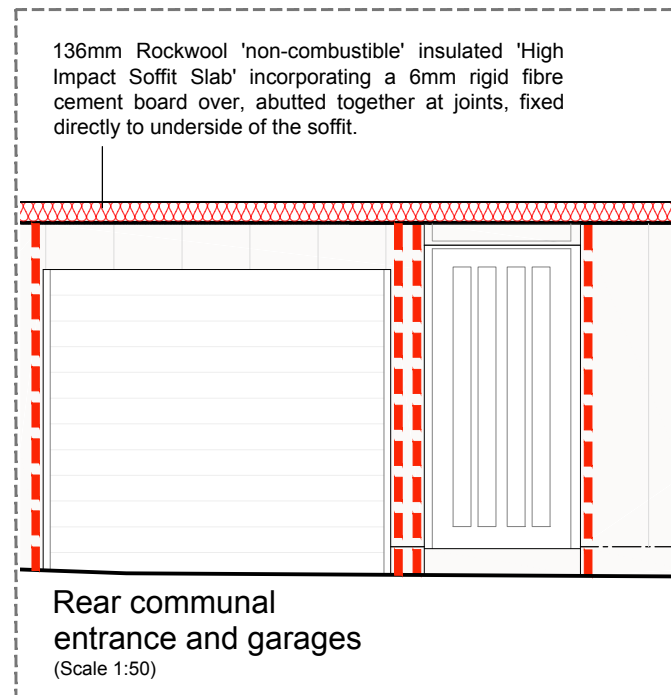
- - - - - TENMAT VFB plus Ventilated Fire Barrier (or similar) within rainscreen cladding and around window/door openings to suit cavity depth
- - - - - TENMAT VFB plus Ventilated Fire Barrier (or similar) within horizontal cladding to suit batten depth
- - - - - TENMAT VFB plus Ventilated Fire Barrier (or similar) within horizontal cladding around windows to suit batten depth
- — — — — Battens to act as vertical cavity barrier within horizontal cladding around window openings, refer to drawing no. 509



REAR ELEVATION (CAR PARK)



SIDE ELEVATION (PARKLANDS RD)



Rear communal entrance and garages (Scale 1:50)

rev	note	date	by
			
178 Birmingham Road West Bromwich West Midlands B70 6QG Tel. 0300 111 7000 www.accordna.org.uk			
client			
Accord Group			
project			
Black Country Retrofit Wrap and Associated Works 100 - 122 Darlaston Road, Kings Hill, WS10 7SR			
title			
Cavity Closers and Fire Compartmentation (Sheet 2/2)			
job	dwg no	rev	date
18-1540	516		Aug 20
			scale
			1:50, 100 @ A3
			drawn
			RP