

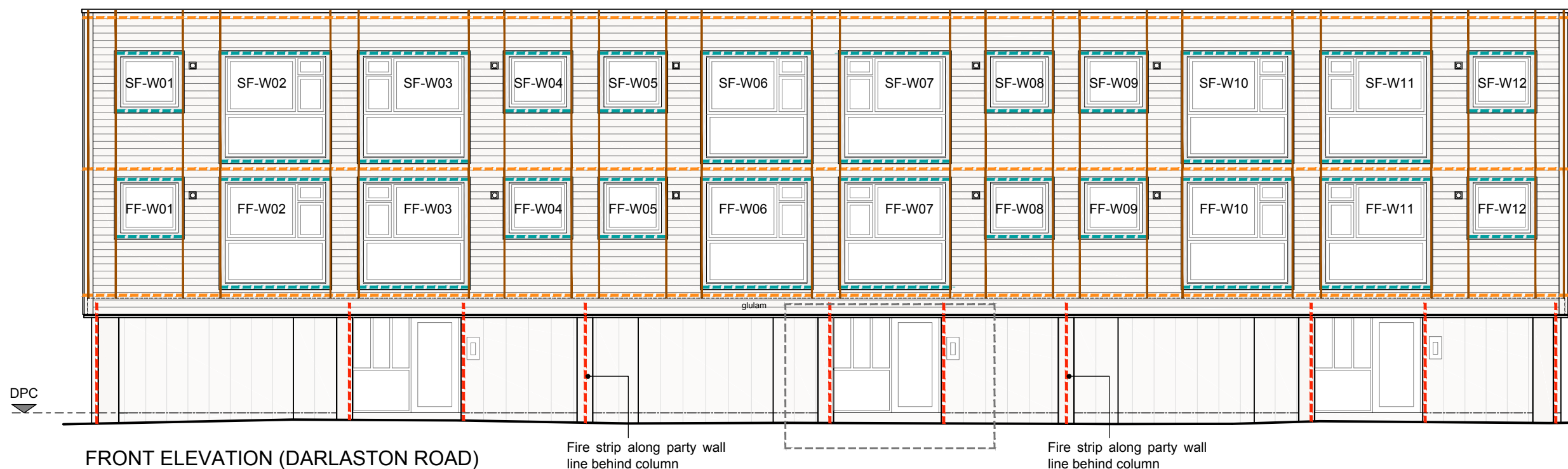
ALL DIMENSIONS ARE TO BE CHECKED ON SITE PRIOR TO CONSTRUCTION. THE CONTRACTOR IS TO NOTIFY THE DESIGN TEAM OF ANY DISCREPANCY BETWEEN DRAWINGS, SPECIFICATION AND SITE DIMENSIONS. DO NOT SCALE FROM THIS DRAWING.

FIRE COMPARTMENTATION to be provided in accordance with Approved Document B Volume 1 - B3 Sections 7: Compartmentation and Section 8: Cavities - Flats.  
Fire closers to be provided at floor level and party walls. With additional closers (fire strips) within the rainscreen cladding as detailed on sheet nos. 515 and 516. For details of junction of compartment wall with roof, refer to sheet no. 507

M&E contractor to allow for fire stopping around all service penetrations in accordance with Building Regulations. Requirements for non-combustible ducting to be confirmed by Building Control.

LEGEND:

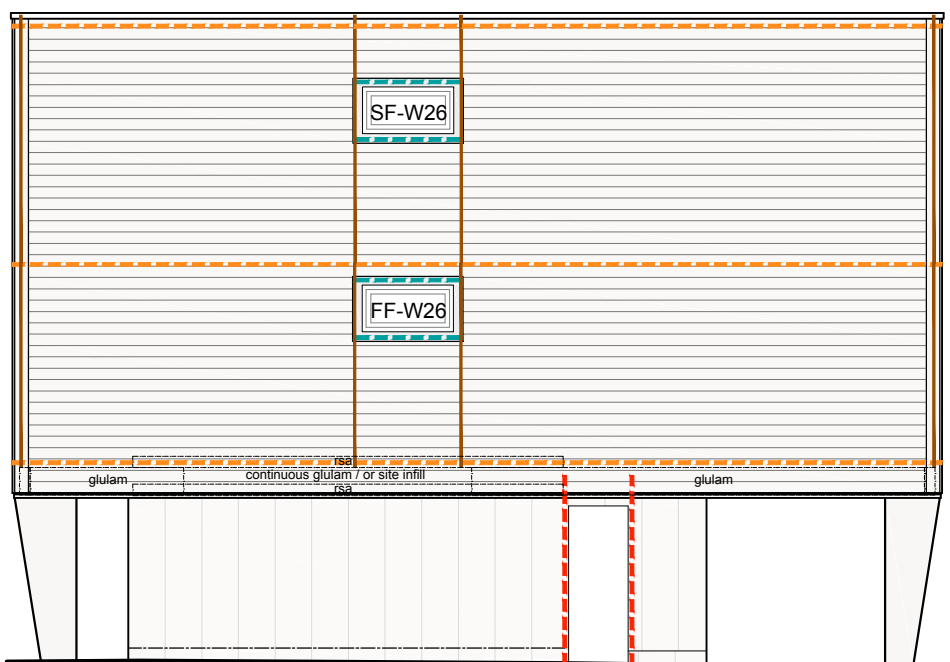
- - - - - TENMAT VFB plus Ventilated Fire Barrier (or similar) within rainscreen cladding and around window/door openings to suit cavity depth
- - - - - TENMAT VFB plus Ventilated Fire Barrier (or similar) within horizontal cladding to suit batten depth
- - - - - TENMAT VFB plus Ventilated Fire Barrier (or similar) within horizontal cladding around windows to suit batten depth
- Battens to act as vertical cavity barrier within horizontal cladding around window openings, refer to drawing no. 509



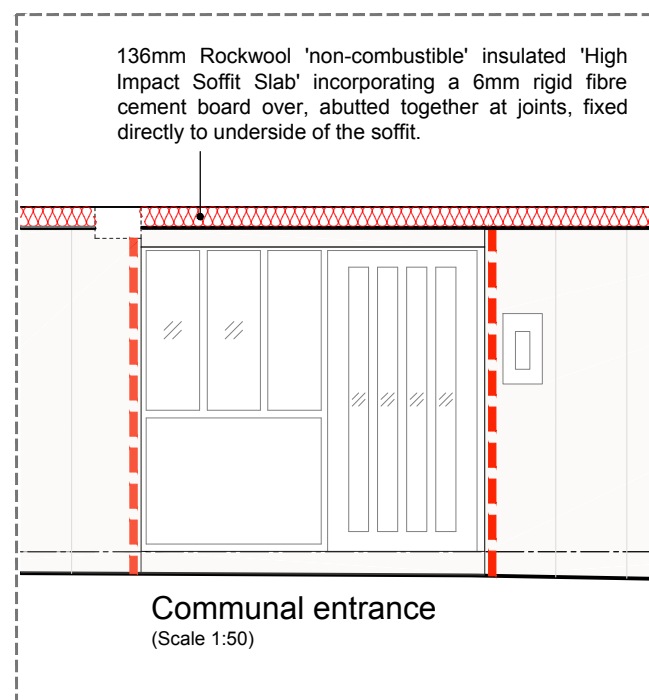
FRONT ELEVATION (DARLASTON ROAD)

Fire strip along party wall line behind column

Fire strip along party wall line behind column



SIDE ELEVATION (PATHWAY)



Communal entrance  
(Scale 1:50)

rev	note	date	by
 			
client Accord Group			
project Black Country Retrofit Wrap and Associated Works 100 - 122 Darlaston Road, Kings Hill, WS10 7SR			
title Cavity Closers and Fire Compartmentation (Sheet 1/2)			
job	dwg no	rev	date
18-1540	515		Aug 20
			scale
			1:50, 100 @ A3
			drawn
			RP

178 Birmingham Road  
West Bromwich  
West Midlands  
B70 6QG  
Tel. 0300 111 7000  
www.accordha.org.uk