

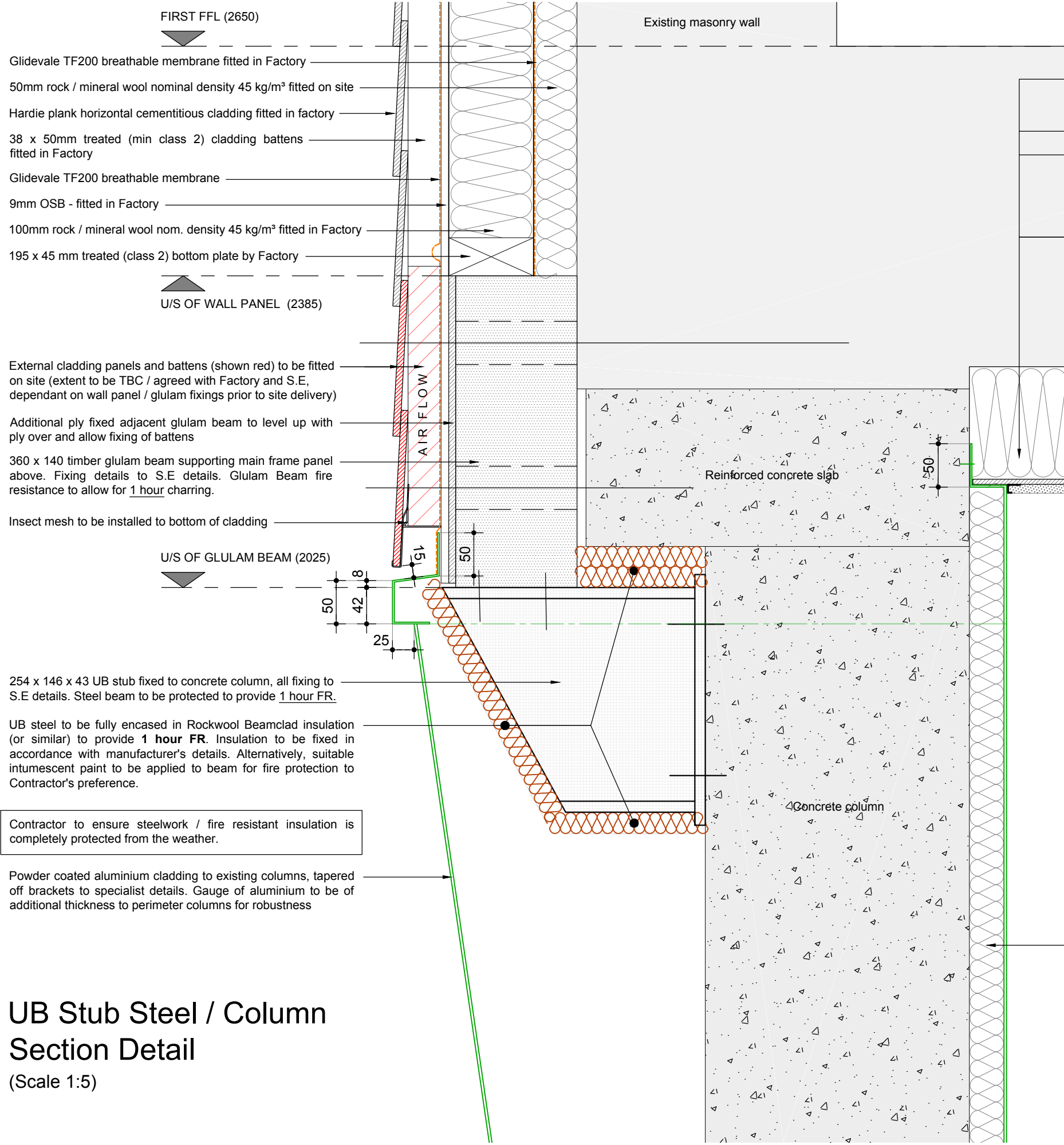
ALL DIMENSIONS ARE TO BE CHECKED ON SITE PRIOR TO CONSTRUCTION. THE CONTRACTOR IS TO NOTIFY THE DESIGN TEAM OF ANY DISCREPANCY BETWEEN DRAWINGS, SPECIFICATION AND SITE DIMENSIONS. DO NOT SCALE FROM THIS DRAWING.

PLAN LEGEND
 SHADED AREA DENOTES EXISTING STRUCTURE

FOR ALL STRUCTURAL DETAILS AND SPECIFICATIONS; REFER TO ADEPT CONSULTING LTD (S.E) DRAWINGS NOS. 4189B SERIES DRAWINGS, LATEST REVISIONS - TBC

M&E CONTRACTOR TO REPOSITION EXISTING ELECTRICAL AND LIGHTING TO WALLS AND SOFFITS AS NECESSARY; AND ENSURE ALL WORK CARRIED OUT MEETS THE BRITISH STANDARD FOR ELECTRICAL SAFETY, BS7671

NOTE: FABRICATOR TO CHECK ALL DIMENSIONS AND LEVELS ON SITE PRIOR TO FABRICATION



Relevant beads, and expansion joints to be installed as necessary as required by the substrate and changes in substrates and BS Standards

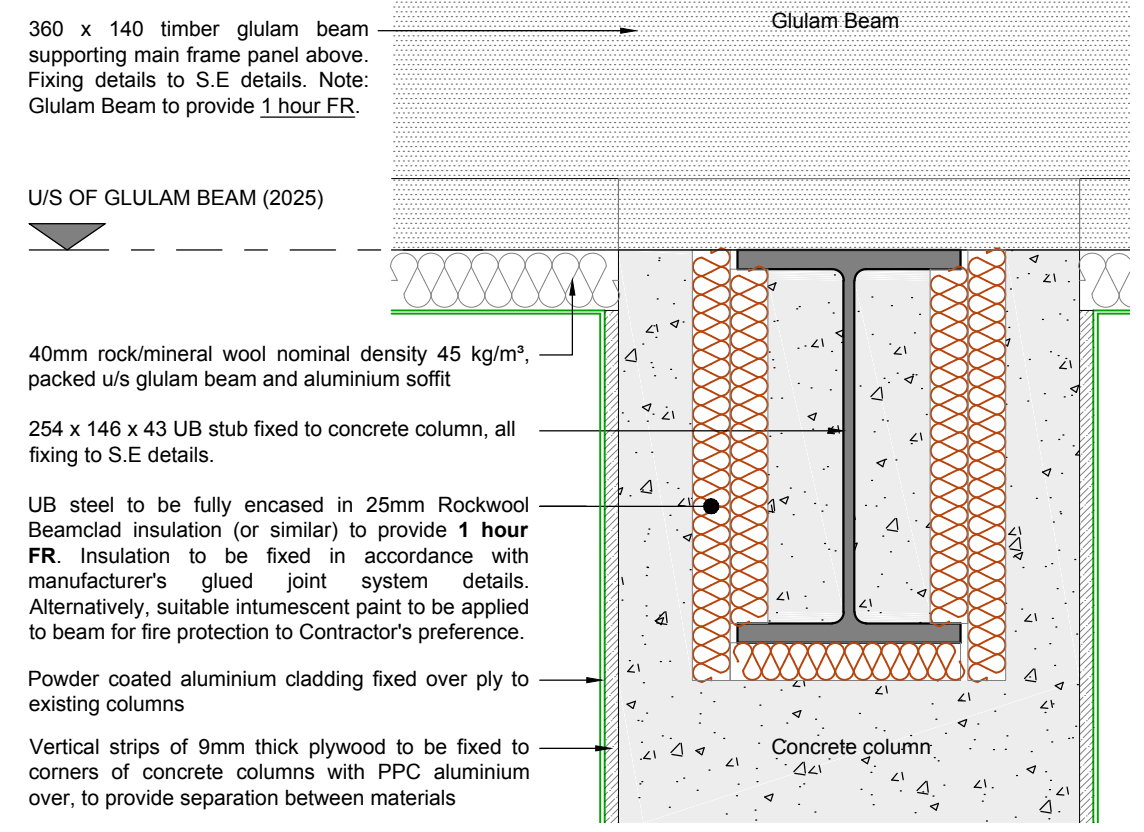
Soffit slabs to be cut as required to accommodate services

Finish - proprietary white 'through coloured' Thin Coat Render to be applied to underside of cement board in accordance with manufacturers recommendations and the relevant British Standards 'Code of Practice for External Rendering'. Ensure jointing tape is used to cover board joints as necessary.

136mm Rockwool insulated 'High Impact Soffit Slab' incorporating a 6mm rigid fibre cement board over, abutted together at joints, fixed directly to underside of the soffit. Insulation to U/S soffit to achieve a min. U Value of 0.24w/m²K in accordance with SAP calculations.

UB Stub / Column Section Detail (Front)

(Scale 1:5)



360 x 140 timber glulam beam supporting main frame panel above. Fixing details to S.E details. Note: Glulam Beam to provide 1 hour FR.

40mm rock/mineral wool nominal density 45 kg/m³, packed u/s glulam beam and aluminium soffit

254 x 146 x 43 UB stub fixed to concrete column, all fixing to S.E details.

UB steel to be fully encased in 25mm Rockwool Beamclad insulation (or similar) to provide 1 hour FR. Insulation to be fixed in accordance with manufacturer's glued joint system details. Alternatively, suitable intumescent paint to be applied to beam for fire protection to Contractor's preference.

Powder coated aluminium cladding fixed over ply to existing columns

Vertical strips of 9mm thick plywood to be fixed to corners of concrete columns with PPC aluminium over, to provide separation between materials

40mm rock/mineral wool nominal density 45kg/m³ to inner face of column only, with PPC aluminium over

Contractor to ensure steelwork / fire resistant insulation is completely protected from the weather.

Powder coated aluminium cladding to existing columns, tapered off brackets to specialist details. Gauge of aluminium to be of additional thickness to perimeter columns for robustness

UB Stub Steel / Column Section Detail

(Scale 1:5)

rev	note	date	by
 			
178 Birmingham Road West Bromwich West Midlands B70 6QG Tel. 0300 111 7000 www.accordha.org.uk			
client	Accord Group		
project	Black Country Retrofit Wrap and Associated Works 100 - 122 Darlaston Road, Kings Hill, WS10 7SR		
title	UB Stub Steel to Column Detail		
job	dwg no	rev	date
18-1540	513		Aug 20
			scale
			1:5 @ A3
			drawn
			RP