

ALL DIMENSIONS ARE TO BE CHECKED ON SITE PRIOR TO CONSTRUCTION. THE CONTRACTOR IS TO NOTIFY THE DESIGN TEAM OF ANY DISCREPANCY BETWEEN DRAWINGS, SPECIFICATION AND SITE DIMENSIONS. DO NOT SCALE FROM THIS DRAWING.

PLAN LEGEND

SHADED AREA DENOTES EXISTING STRUCTURE

NOTE: FABRICATOR TO CHECK ALL DIMENSIONS AND LEVELS ON SITE PRIOR TO FABRICATION

DRAWING TO BE READ INCONJUNCTION WITH LOCAL HOMES DETAILS

ALUMINIUM FABRICATOR / SUPPLIER TO ENSURE EVERY WINDOW SURROUND IS CLEARLY DENOTED FOR EACH SPECIFIC SITE MEASURED OPENING, IN ACCORDANCE WITH WINDOW REFERENCES AS INDICATED ON INDESIGN ELEVATIONS

50mm full fill cavity, rock / mineral wool nominal density 45 kg/m³, installed on site by Contractor

Glidevale TF200 breathable membrane fitted in Factory

100mm - rock / mineral wool nominal density 45 kg/m³ by Factory

9mm OSB fitted in Factory

Glidevale TF200 breathable membrane fitted in Factory

38 x 50mm treated (min class 2) cladding battens fitted in Factory

Hardie plank horizontal cementitious cladding fitted in Factory

Laps in membrane to be stapled

38 x 50mm treated (min class 2) cladding battens fitted in Factory

Aluminium jamb flashing, supplied by Factory, fitted on site by contractor

Additional adhesive seal to be provided for aluminium jamb flashing against closure angle

Closure angle fitted to timber frame in Factory

Glidevale TF200 breathable membrane fitted in Factory

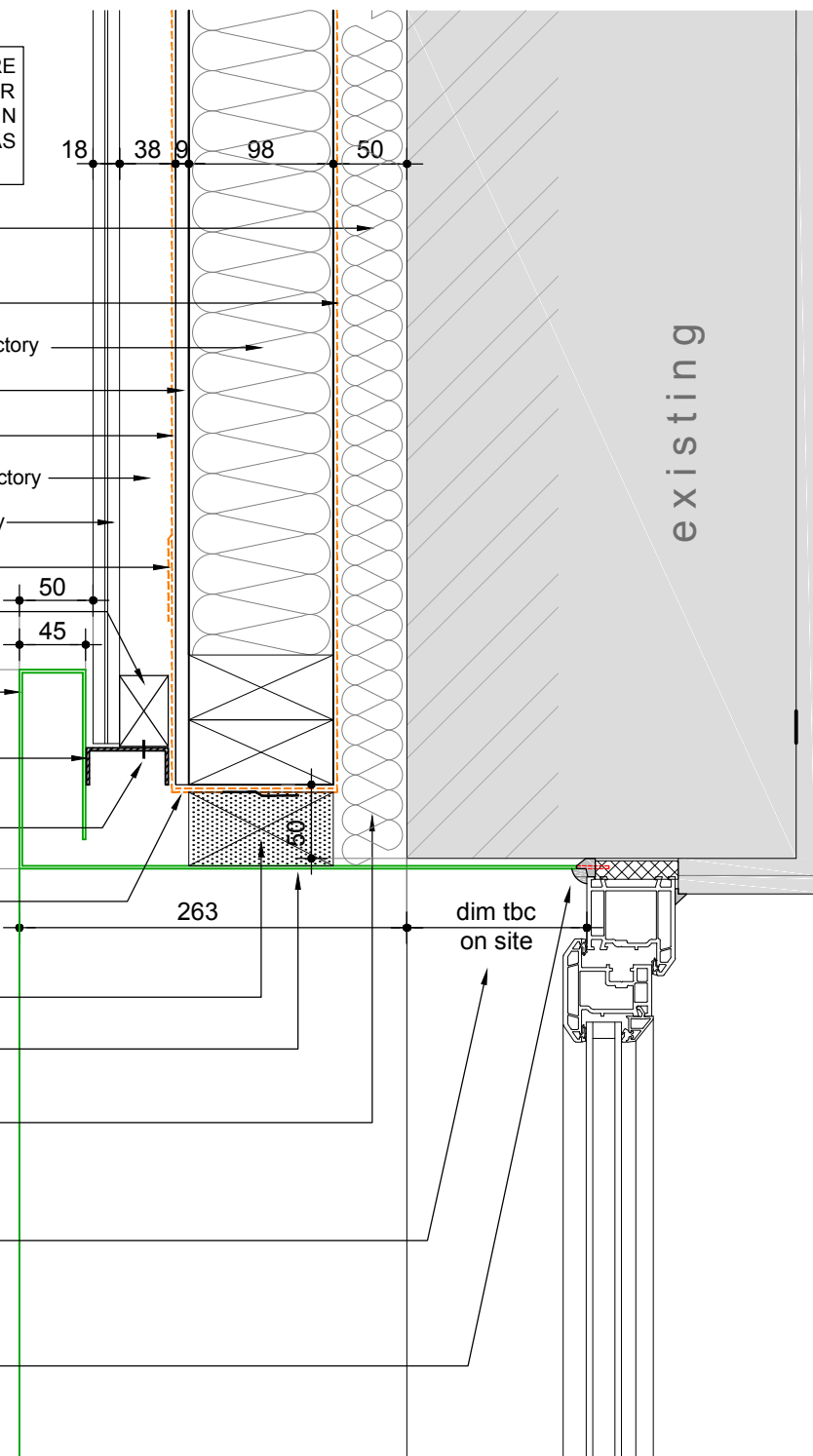
Timber panel packed on site to suit by contractor

Timber panel set back 50mm from existing structural opening to allow TOL for any site discrepancies

Rock / mineral wool insulation fitted on site. Contractor to ensure insulation provides a tight seal to perimeter of window openings under compression, fitting snug to jamb, sill and head flashings.

Existing jamb width (from ext face of window frame to face of brickwork) to be checked across every window to ensure aluminium jamb flashing is adequately sized by supplier prior to any fabrication

Contractor to confirm whether mastic can be removed from existing window to allow aluminium jamb flashing to fit behind window frame for a neater finish. Thereafter, flexible silicone seal supplied and fitted by the contractor over - TBC



Window Jamb Detail Cementitious Cladding (Scale 1:5)

Please note: the proposed structural opening of the panels is currently shown 50mm larger, than the existing structural window openings indicated on the site survey to allow for site tolerances

A Aluminium profile revised and insulation added to external face of existing wall. Dwg no. revised 22/08/20 RP

rev	note	date	by
A	Aluminium profile revised and insulation added to external face of existing wall. Dwg no. revised	22/08/20	RP



178 Birmingham Road
West Bromwich
West Midlands
B70 6QG
Tel. 0300 111 7000
www.accordna.org.uk

client
Accord Group

project
Black Country Retrofit Wrap and Associated Works
100 - 122 Darlaston Road, Kings Hill, WS10 7SR

title
Window Jamb Detail

job	dwg no	rev	date	date
18-1540	509	A	scale drawn	Jul 20 1:5 @ A3 RP